

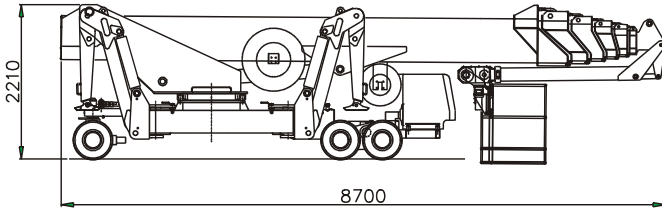
The new RAGNO generation

RAGNO XTJ 48

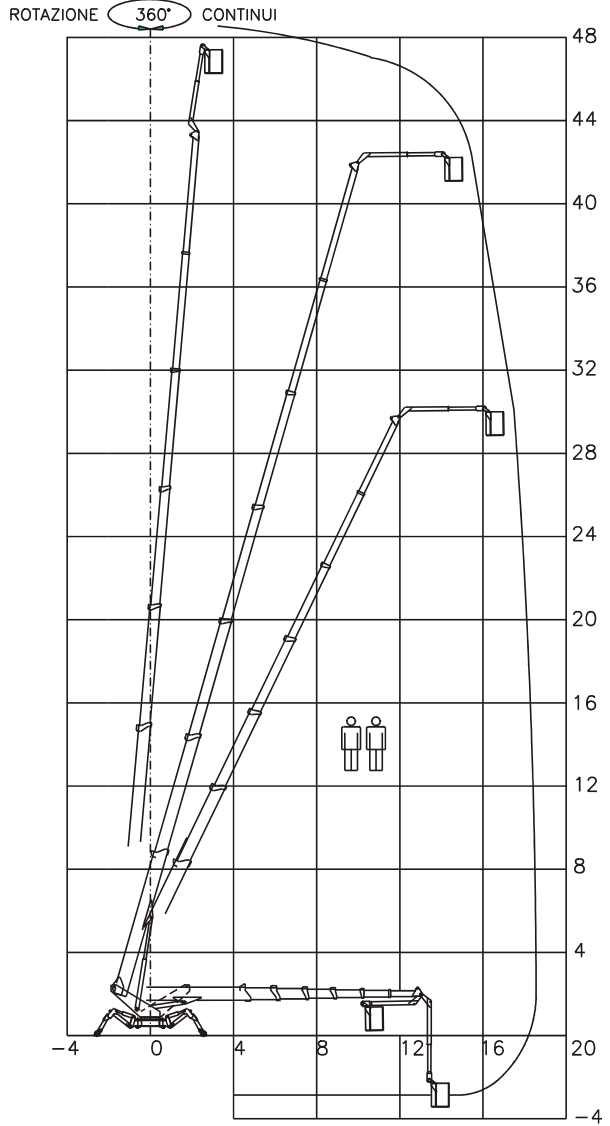
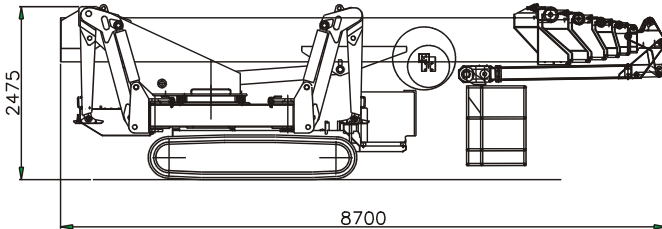
from -4 to +48m with agility and precision
multi-telescopic main boom and upper jib allow a direct approach at all the different heights
variable positions of each leg offer numerous set-up configurations
smooth and progressive radio-controls with automatic ramp for smooth controlled operation
automatic "area manager system" constantly monitors a combination of over-reach in
all outrigger positions and aerial cage at the different heights
available on retractable rubber tracks or wheeled chassis, with DC power pack



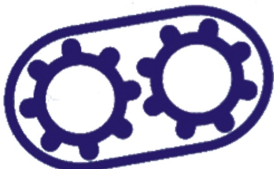
RAGNO XTJ 48/R (WHEELED VERSION)



RAGNO XTJ 48/C (CRAWLER VERSION)



RAGNO XTJ 48/R	MODEL	RAGNO XTJ 48/C
35 KW	NO-NOISE DIESEL ENGINE	35 KW
220V-2,2KW 380V-5,5KW	ELECTRIC MOTORS	220V-2,2KW 380V-5,5KW
3 AXLES WITH 6 \ 8 WHEELS	CHASSIS FRAME	ON RUBBER TRACKS VARIABLE WIDTH
6 X 4	HYDRAULIC TRANSMISSION	INDEPENDENT
2 KM/H \ 25%	APPROX. MAX. SPEED \ APPROX. MAX. SLOPE	1,4 KM/H \ 40%
CONTINUOUS 360°	TURNTABLE SLEWING	CONTINUOUS 360°
2.400 X 800 MM	INTERCHANGEABLE AERIAL CAGES (MAX. DIM.S)	2.400 X 800 MM
90° + 80°	CAGE ROTATION	90° + 80°
120 \ 200 KGS	SAFE WORKING LOAD	120 \ 200 KGS
95° - 125°	VARIABLE ARTICULATION OF THE OUTRIGGERS	95° - 125°
4.100 X 6.300 MMS	VARIABLE GEOMETRY STABILIZATION (MIN. DIM.S)	4.350 X 6.300 MMS
1.160 MMS WITH 6 WHEELS 1.620 MMS WITH 8 WHEELS	MIN. WIDTH (WITHOUT THE CAGE)	1.450 MMS NARROW POSITION 1.900 MMS EXTENDED POS.
11.000 KGS	WEIGHT	13.200 KGS
6.500 KGS	APPROX. MAX PRESSURE OF EACH OUTRIGGER	6.800 KGS
4,4 KGS\CM2	APPROX. THEORETIC. PRESSURE OF THE WHEELS \ TRACKS	0,66 KGS\CM2



trackedaccess

Tracked Access Ltd
Access & Lifting Specialists
t: 0845 603 5360 / f: 0845 603 5361
info@trackedaccess.com
www.trackedaccess.com

NR. 027EF