

Ragno Spider XTJ 38/C

Crawler Version

TCA LIFTING LTD
Sales & Rental
Call: +44 845 603 5360
info@tcalifting.com
www.tcalifting.com

Features:

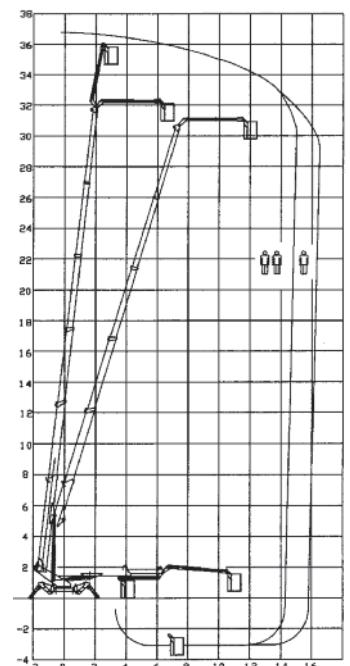
- The XTJ range is built with a telescopic jib to improve the reach characteristics.
- Non-marking rubber tracks for use inside & out. Equally at home inside on a marble floor or across a muddy field or construction site.
- Removable cage and compact dimensions allows machine to fit through the narrowest entrances.
- Great manoeuvrability - can turn on the spot by reversing crawler drive.
- Dual safe working load; One man 120kg and two man 200kg cage capacity for extra versatility.
- Bi-Energy - Diesel engine for external work and 230VAC electric motor for internal or silent use. Can also be supplied with a DC battery power-pack.
- Quick and easy to operate with platform and remote control ground control boxes.
- Low weight and minimal point loads allows the machine to be used on sensitive flooring or lawns.
- Very flexible due to jib and rotating cage and variable jack positions; Allows access to awkward areas.



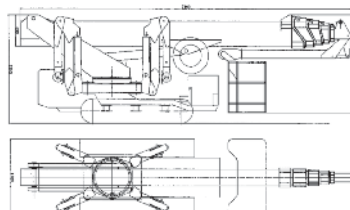
Specification:

Diesel Engine	20kW
Electric Motor	230V/2.3kW. 380V/5.5kW
Maximum Slope	40%
Maximum Speed	2kmh
Turntable Slewing	360° Continuous
Aerial Cage	2.4 x 0.8/0.9m
Cage Rotation	80° + 80°
Safe Work Load	200kgs
Weight	9300kgs

Working Envelope:



Dimensions:



All data is for guidance only and is subject to change without prior notice.