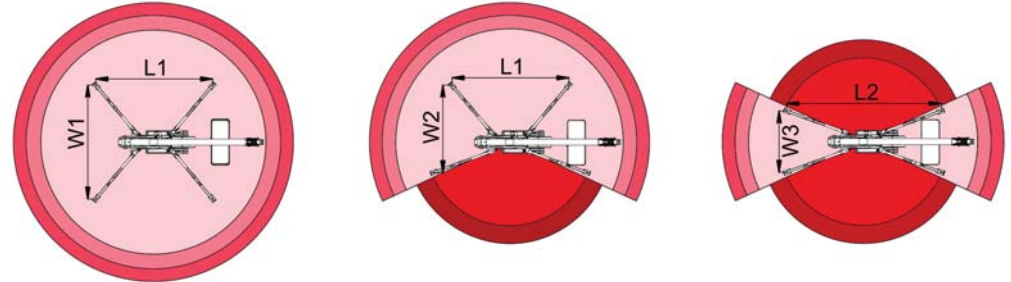
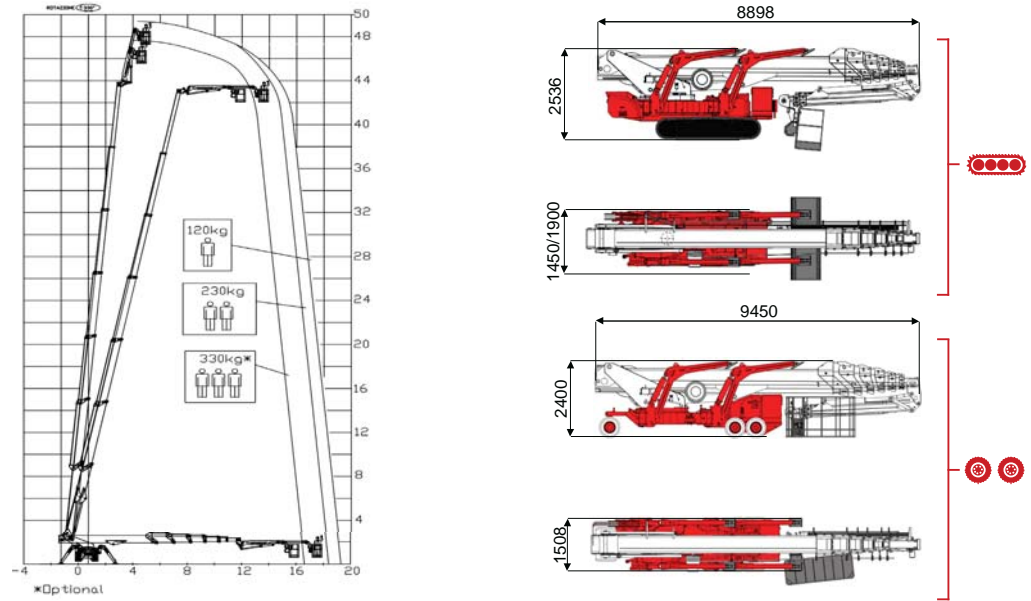




49,2 m ↑
19,3 m →
330 Kg 🧑🧑🧑



16800 mm	18500 mm	19300 mm	13800 mm	15500 mm	L1	L2	W1	W2	W3
330 kg	230 kg	120 kg	330 kg	120/230 kg	6250 mm	6946 mm	5000 mm	4500 mm	4000 mm



XTJ 48/C-R 49,2 m 19,3 m 330 kg 175° 660° 240x70 cm 90°+80° 4,1-5,3 m 15% 40% 1,5 km/h 13650 kg 80 kN 4,09 kN/m² 6,39 kN/m² 1450/1900 mm 8898 mm 2536 mm

Battery type	Battery charge	Add. Weight	Autonomy	Charging time	Electropump	
ECO DC+AC	48V 270 A/h 5h	230V-48V 45A	400 kg	6-7 h endless	7h	48V 9 kW

TCA Lifting Ltd
Unit 4, Derby Dell Buildings, Lasham
Hampshire. GU34 5RX United Kingdom
Tel. (+44) 0845 603 5360
info@tcalifting.com
www.tcalifting.com

